



## nbn® Sky Muster® plans – Compare the benefits

### Description

# nbn® Sky Muster® plans – Compare the benefits

nbn® Sky Muster® has two different plan types – Sky Muster® and Sky Muster® Plus Premium. The table below shows the differences between the two plan types, so you can make an informed decision on whether to move from your standard nbn® Sky Muster® plan or a Sky Muster® Plus Premium plan.

### **Sky Muster® Plus plans were discontinued from 1 March 2025.**

If you have not switched from a Sky Muster Plus capped plan before 1 March 2025, then on 1 March 2025, you will be automatically migrated to a nbn Sky Muster Plus Premium plan, in accordance with plan mapping shared with your internet provider.

nbn does not require you to stay on your assigned Premium plan for any particular period of time. If you want to change your plan, please reach out to your internet provider. Find out more about Sky Muster satellite plans [here](#).

Please contact your internet service provider to understand what this means for you and what other options are available.

-



# Your guide to nbn<sup>®</sup> Sky Muster<sup>®</sup> satellite plans

The **nbn** Sky Muster satellite service delivers fast broadband services in hard-to-reach places across Australia, giving homes and small businesses more opportunities to connect, share and learn.

Use this table to choose the right plan for you.



**Tip:** To optimise your satellite experience, ask your provider whether an existing or new Wi-Fi modem or router would best support your chosen plan.



## Which **nbn** Sky



### **nbn** Sky Muster

**Most suitable for**

Low data usage needs

**Unmetered data usage?**

Fully metered. All online activities count towards your monthly data allowance

**Monthly data allowance**

incl. upload and download data

Ask your provider for details

**Wholesale speeds**

Plans based on 12/1Mbps and 25/5Mbps available\*

\*Fair Use Policy and shaping apply.

\*Your experience may vary depending on factors such as your internet signal reception and latency. Some activity may be shaped by nbn.

#Supplementary Burst allows for wholesale data transfer speeds to Plus plans with a data allowance for video streaming and VPN use up to 50Mbps download and 10Mbps upload from time to time. For 100Mbps download and 10Mbps upload from time to time, nbn does not guarantee 100Mbps (where applicable). Achievable burst speeds are subject to usage of the network by all users and may also be dependent on



The nbn® website holds further information on [Sky Muster®](#) and [Sky Muster® Plus Premium](#).

## Want to easily come back to it?

Download this guide and go through it again whenever you like!

[Download](#)



## Frequently Asked Questions

- 1What is metering?

Metered content counts towards your included monthly data quota.

- 2What is unmetered/uncapped data?

Unmetered/uncapped data does not count against your monthly included data, allowing you to use your internet connection freely for activities that fall under this category.

- 3What is shaped data?

Shaped data occurs when you've used your data allowance for VPN and video streaming during 4 pm to 12 am midnight for the month. If you are shaped, your connection will be slowed down to basic speeds for the remainder of that month.

- 4How does data usage work on standard nbn® Sky Muster® plans?

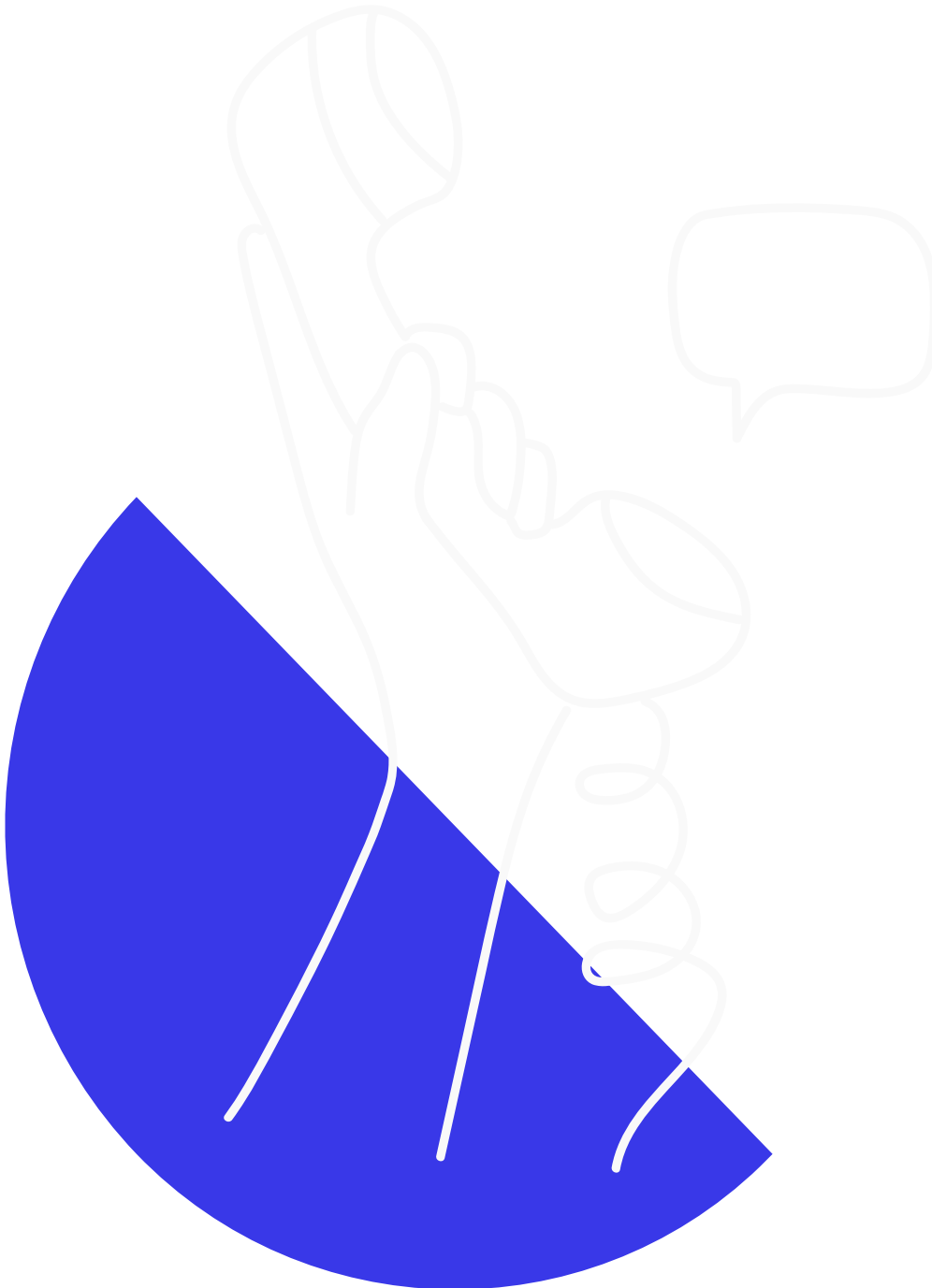
On standard plans, all activities are metered, and usage counts towards your plan's data allowance. If you run out of data, you may be shaped unless you can top up your plan with a "data block," which is not offered by all providers.



- 5 What are the features of nbn® Sky Muster® Plus Premium plans?

Sky Muster® Plus Premium plans offer uncapped data usage with higher speeds, eliminating data usage allowances.

•





## Feeling overwhelmed?

Complete a request for a Connectivity Report and we will provide a fully customised, free and independent overview of all your internet and/or phone connectivity options.

[Help me get connected](#)

### Category

1. Guides

### Date

31/07/2025

### Date Created

19/03/2024