



nbn® Fixed Wireless Solar Mount Option: Hero business solution!

Description

nbn® Fixed Wireless Solar Mount Option: Hero business solution!

Who

McInnes Earthmoving

Where

Heyfield, VIC

What

Point to Point wireless bridge for a nbn Fixed Wireless connection to the office building

The problem

McInnes Earthmoving originally had an ADSL connection before changing to nbn® Sky Muster, but still struggled with a slow and unreliable connection. They tried installing antennas and mobile boosters which improved mobile phone service, but did not fix the internet issue. This directly impacted their daily operations.

The solution

After four years of minimal mobile service, dropouts, slow internet speeds, McInnes Earthmoving reached out to the Regional Tech Hub for a solution. We worked in collaboration with nbn® Co and ultimately nbn decided to install the first official non-standard nbn® Fixed Wireless Solar Mount Option to significantly improve internet speeds and reliability for their business. In particular, the solution was to install a 'Point to Point' (PtP) wireless bridge was used to connect the Fixed Wireless signal back to the office building. This resolved the issue and as a result, the McInnes' were able to access high speed, quality internet to their office building.

Since the installation, average upload and download speeds have increased to around 60-70 mbps a huge improvement. Staff can now complete all daily operations with no dropout issues



regardless of whether they are sitting in the office or working in the surrounding sheds

– McInnes Earthmoving

Download the full case study and easily come back to it later when you're offline

[Download](#)

[Back to case study](#)

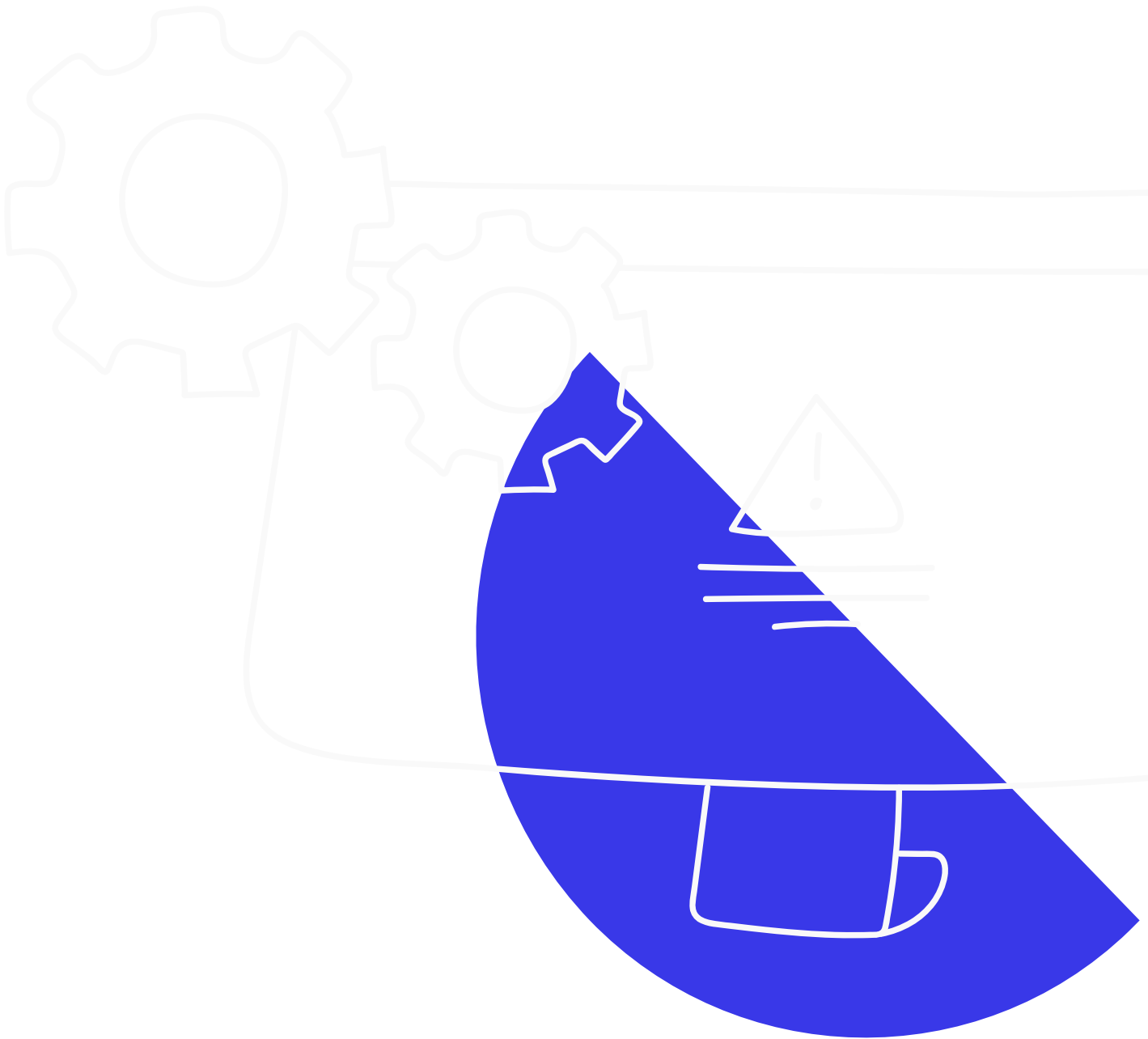
See our other case studies

- Case Studies
June 21, 2024
On Farm Connectivity: Water monitoring on remote NT station
- Case Studies
May 23, 2024
On Farm Connectivity Case Study: Automated and portable cattle weighing system
- Case Studies
May 23, 2024
On Farm Connectivity case study: Comprehensive on-farm security system
- Case Studies
May 23, 2024
On Farm Connectivity case study: Digital water monitoring infrastructure

Are you having a similar issue?

Check out this resource that we've created to help fix your issue.

[Read more](#)



Category

1. Case Studies

Date

30/06/2025

Date Created

14/03/2024